

Sälenführungsgestelle  
Die sets  
Portastampi  
Jarmi  
Vodící stojánky

**A**

**B** Führungselemente  
Guide elements  
Elementi di guida  
Vodilni elementi  
Vodící elementy

**C** Schneidelemente  
Cutting elements  
Elementi di taglio  
Rezilni elementi  
Střížné díly

**D** Federelemente  
Springs & elastomers  
Molle ed elastomeri  
Vzmeti in elastomeri  
Pružiny a elastomery

**E** Zubehör  
Accessories  
Accessori  
Připomočky  
Příslušenství

**F** Info



**A**

**SÄULENFÜHRUNGSGESTELLE / DIE SETS / PORTASTAMPI  
JARMI / VODÍCÍ STOJÁNKY**

11-1

11-4



**Normgestelle**

Standard die sets

**Portastampi standard**

Standardní jarmi

Standardní vodící stojánky

**Sondergestelle**

Custom made die sets

**Portastampi su richiesta**

Jarmi po naročilu

Vodící stojánky na zakázku

11-5

11-8



**Normgestelle**

Standard die sets

**Portastampi standard**

Standardní jarmi

Standardní vodící stojánky

**Sondergestelle**

Custom made die sets

**Portastampi su richiesta**

Jarmi po naročilu

Vodící stojánky na zakázku

**INFO**

11-9



**Säulengestelle toleranzen**

Die sets Tolerances

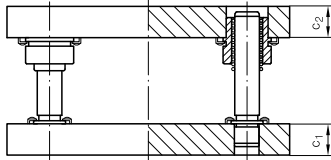
**Portastampi - tolleranze**

Jarmi - tolerance

Vodící stojánky - tolerance

BITTE KOPIEREN  
PLEASE COPY  
COPIARE PREGO  
PROSIMO KOPIRAJTE

Normgestelle  
Standard die sets  
Portastampi standard  
Standardni jarmi

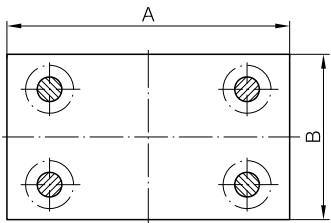


**P2**  
Platte 2 / Plate 2  
Piastra 2 / Plošča 2

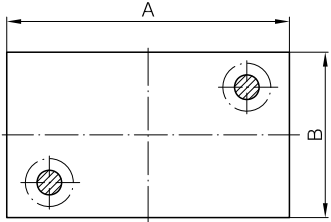
**P1**  
Platte 1 / Plate 1  
Piastra 1 / Plošča 1

Y - Kombination der Platten dicke  
Y - Combination of plates thickness  
Y - Combinazione dei spessori piastre  
Y - Kombinacija debelin plošč

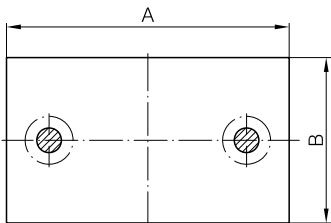
**1112 ISO**  A \_\_\_\_\_ x B \_\_\_\_\_ x Y \_\_\_\_\_



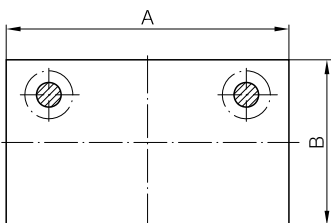
**1122 ISO**  A \_\_\_\_\_ x B \_\_\_\_\_ x Y \_\_\_\_\_



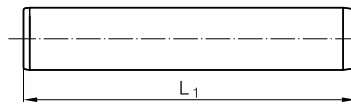
**1132 ISO**  A \_\_\_\_\_ x B \_\_\_\_\_ x Y \_\_\_\_\_



**1142 ISO**  A \_\_\_\_\_ x B \_\_\_\_\_ x Y \_\_\_\_\_



Führungssäulen / Guide pillars / Colonne di guida / Vodilni stebri



**1200 ISO**

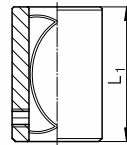
**P1**  L<sub>1</sub> = \_\_\_\_\_



**1210 ISO**

**P1**  L<sub>1</sub> = \_\_\_\_\_

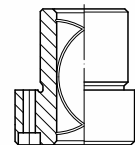
Führungsbuchsen / Guide bushes / Bussole guida / Vodilne puše



**1230 ISO**



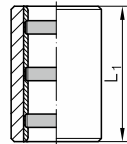
**1231\_ ISO**



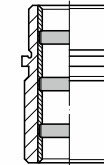
**1232\_ ISO**

**P2**  L<sub>1</sub> = \_\_\_\_\_  1231\_ ISO  1232\_ ISO

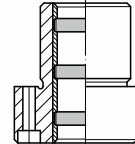
Führungsbuchsen, stahl-bronze mit Festschmierstoff / Self lubricating guide bushes  
Bussole guida con lubrificante solido / Samomazalne vodilne puše



**1240 ISO**



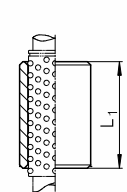
**1241\_ ISO**



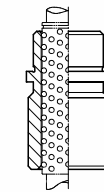
**1242\_ ISO**

**P2**  L<sub>1</sub> = \_\_\_\_\_  1241\_ ISO  1242\_ ISO

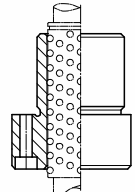
Kugelführungsbuchsen / Ball bearing guide bushes  
Bussole di guida a sfera / Krogljčne vodilne puše



**1250 ISO**



**1251\_ ISO**

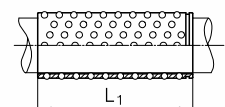


**1252\_ ISO**

**P2**  L<sub>1</sub> = \_\_\_\_\_  1251\_ ISO  1252\_ ISO

**H**  **V**

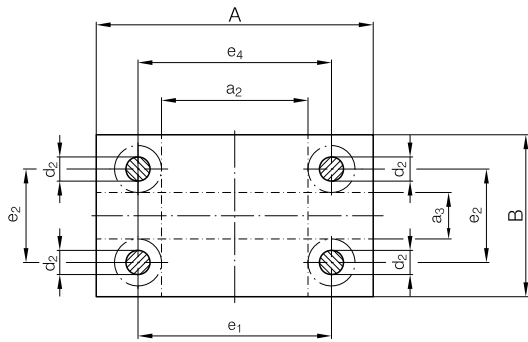
3 x d<sub>1</sub> ≤ 32  
4 x d<sub>1</sub> ≥ 38



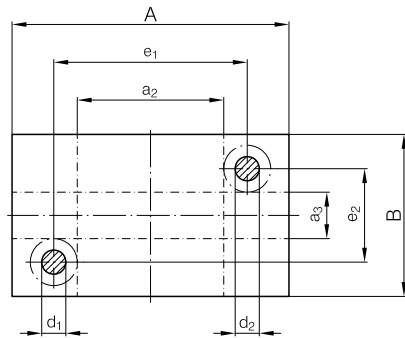
**1259 ISO**

**P2** L<sub>1</sub> = \_\_\_\_\_

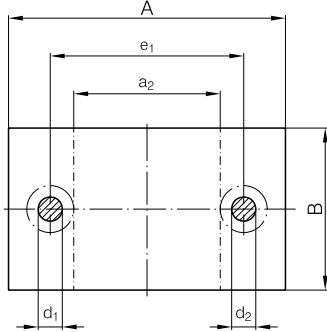
## 1112 ISO



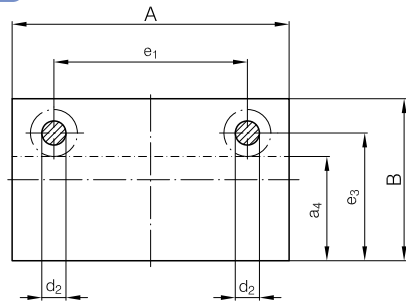
## 1122 ISO



## 1132 ISO



## 1142 ISO



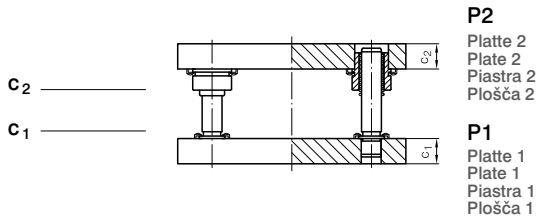
a <sub>2</sub> x B	A x a <sub>3</sub>	A x a <sub>4</sub>	d <sub>1</sub>	d <sub>2</sub>	e <sub>1</sub>	e <sub>2</sub>	e <sub>3</sub>	e <sub>4</sub>	c <sub>1</sub>	c <sub>2</sub>	Y	A x B
60 x 80	-	-	19	20	100	-	-	-	32	32	1	160 x 80
60 x 100	-	160 x 50							70	32	1	160 x 100
60 x 125	-	160 x 75							95	32	1	160 x 125
60 x 160	160 x 60	160 x 110							100	130	103	32
70 x 100	-	-	24	25	120	-	-	-	40	40	1	200 x 100
									40	32	2	
									32	40	3	
									32	32	4	
70 x 125	-	200 x 60	24	25	120	-	85	-	40	40	1	200 x 125
									40	32	2	
									32	40	3	
									32	32	4	
70 x 160	-	200 x 95	24	25	120	-	120	-	40	32	2	200 x 160
									32	40	3	
									32	32	4	
									40	40	1	
70 x 200	200 x 70	200 x 135	24	25	170	120	160	123	40	40	1	200 x 200
									40	32	2	
									32	40	3	
									32	32	4	
120 x 125	-	250 x 60	24	25	170	-	85	-	40	40	1	250 x 125
									40	32	2	
									32	40	3	
									32	32	4	
120 x 160	-	250 x 95	24	25	170	-	120	-	40	40	1	250 x 160
									40	32	2	
									32	40	3	
									32	32	4	
120 x 200	250 x 70	250 x 135	24	25	170	120	160	173	40	40	1	250 x 200
									40	32	2	
									32	40	3	
									32	32	4	
120 x 250	250 x 120	250 x 185	24	25	170	170	210	173	40	40	1	250 x 250
									40	32	2	
									32	40	3	
									32	32	4	
165 x 160	-	315 x 85	30	32	225	-	115	-	50	50	1	315 x 160
									50	40	2	
									40	50	3	
									40	40	4	



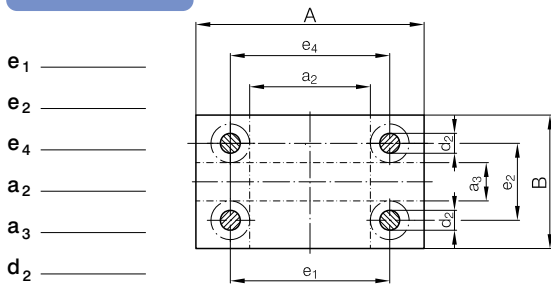
a <sub>2</sub> x B	A x a <sub>3</sub>	A x a <sub>4</sub>	d <sub>1</sub>	d <sub>2</sub>	e <sub>1</sub>	e <sub>2</sub>	e <sub>3</sub>	e <sub>4</sub>	C <sub>1</sub>	C <sub>2</sub>	Y	A x B				
165 x 200	315 x 50	315 x 125	30	32	225	110	155	228	50	50	1	315 x 200				
									50	40	2					
									40	50	3					
									40	40	4					
165 x 250	315 x 100	315 x 175				225	160		205	205	228	50	50	1	315 x 250	
												50	40	2		
					40							50	3			
					40							40	4			
165 x 315	315 x 165	315 x 240			225		225		270	270		228	50	50	1	315 x 315
													50	40	2	
						40							50	3		
						40							40	4		
250 x 200	400 x 50	400 x 125	30	32		310	110	155	313	50			50	1	400 x 200	
										50			40	2		
					40					50			3			
					40					40			4			
250 x 250	400 x 100	400 x 175			310		160	205		205	313		50	50	1	400 x 250
													50	40	2	
						40							50	3		
						40							40	4		
250 x 315	400 x 165	400 x 240				310	225	270		270		313	50	50	1	400 x 315
													50	40	2	
					40								50	3		
					40								40	4		
250 x 400	400 x 250	400 x 325	310	310	355		355	313	50	50			1	400 x 400		
									50	40			2			
						40			50	3						
						40			40	4						
330 x 250	500 x 80	500 x 165		38	40	400	150		200	403	50		50	1	500 x 250	
											50		40	2		
			40								50		3			
			40								40		4			
330 x 315	500 x 145	500 x 240	400				215		265		265	403	50	50	1	500 x 315
													50	40	2	
						40							50	3		
						40							40	4		
330 x 400	500 x 240	500 x 315				400	300	350	350		403		50	50	1	500 x 400
													50	40	2	
			40										50	3		
			40										40	4		
330 x 500	500 x 330	500 x 415	400	400	450		450	403	50	50			1	500 x 500		
									50	40			2			
						40			50	3						
						40			40	4						
430 x 315	630 x 115	630 x 215		48	50	510	195		255	513		63	63	1	630 x 315	
												63	50	2		
			50									63	3			
			50									50	4			
430 x 400	630 x 200	630 x 300	510				280		340		340	513	63	63	1	630 x 400
													63	50	2	
						50							63	3		
						50							50	4		
430 x 500	630 x 300	630 x 400				510	380	440	440		513		63	63	1	630 x 500
													63	50	2	
			50										63	3		
			50										50	4		
430 x 630	630 x 430	630 x 530	510	510	570		570	513	63	63			1	630 x 630		
									63	50			2			
						50			63	3						
						50			50	4						
510 x 400	710 x 200	710 x 300		48	50	590	280		340	593		63	63	1	710 x 400	
												63	50	2		
			50									63	3			
			50									50	4			
510 x 500	710 x 300	710 x 400	590				380		440		440	593	63	63	1	710 x 500
													63	50	2	
				50		63							3			
				50		50							4			
510 x 630	710 x 430	710 x 530		590		510	570	570	593		63		63	1	710 x 630	
											63		50	2		
			50								63		3			
			50								50		4			
600 x 400	800 x 200	800 x 300	680		280	340	340	683		63	63		1	800 x 400		
										63	50		2			
				50						63	3					
				50						50	4					
600 x 500	800 x 300	800 x 400		680	380	440	440			683	63	63	1	800 x 500		
											63	50	2			
			50								63	3				
			50								50	4				
600 x 630	800 x 430	800 x 530	680		510	570	570		683		63	63	1	800 x 630		
											63	50	2			
				50							63	3				
				50							50	4				

BITTE KOPIEREN  
PLEASE COPY  
COPIARE PREGO  
PROSIMO KOPIRAJTE

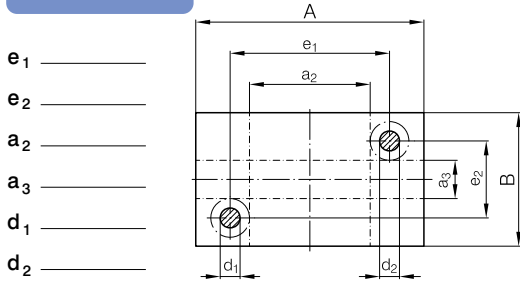
Sondergestelle  
Custom made die sets  
Portastampi su disegno  
Jarmi po naročilu



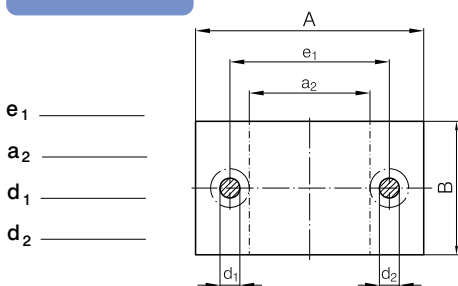
**1112 ISO**  A \_\_\_\_\_ x B \_\_\_\_\_



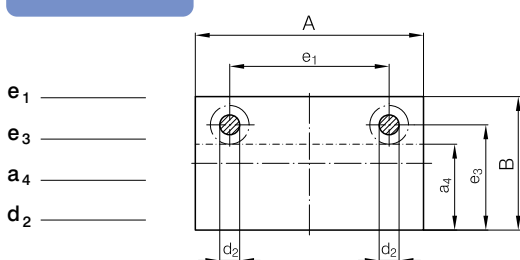
**1122 ISO**  A \_\_\_\_\_ x B \_\_\_\_\_



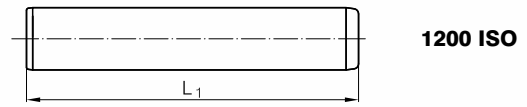
**1132 ISO**  A \_\_\_\_\_ x B \_\_\_\_\_



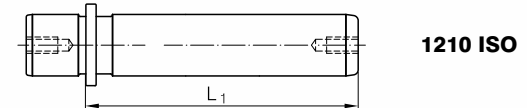
**1142 ISO**  A \_\_\_\_\_ x B \_\_\_\_\_



Führungssäulen / Guide pillars / Colonne di guida / Vodilni stebri

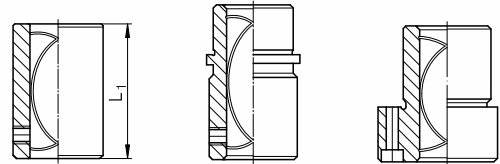


**P1**  L<sub>1</sub> = \_\_\_\_\_



**P1**  L<sub>1</sub> = \_\_\_\_\_

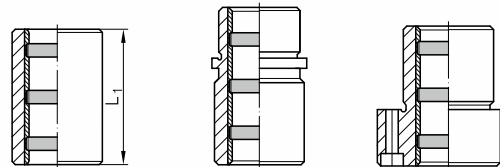
Führungsbuchsen / Guide bushes / Bussole guida / Vodilne puše



**1230 ISO**      **1231\_ ISO**      **1232\_ ISO**

**P2**  L<sub>1</sub> = \_\_\_\_\_  1231\_ ISO  1232\_ ISO

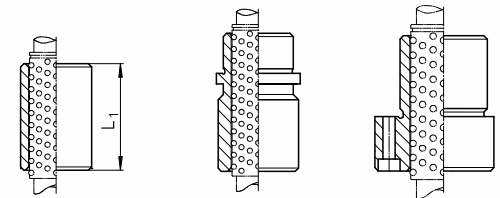
Führungsbuchsen, stahl-bronze mit Festschmierstoff / Self lubricating guide bushes  
Bussole guida con lubrificante solido / Samomazalne vodilne puše



**1240 ISO**      **1241\_ ISO**      **1242\_ ISO**

**P2**  L<sub>1</sub> = \_\_\_\_\_  1241\_ ISO  1242\_ ISO

Kugelführungsbuchsen / Ball bearing guide bushes  
Bussole di guida a sfere / Krogljčne vodilne puše

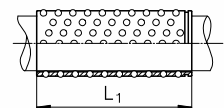
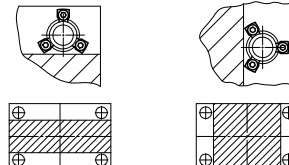


**1250 ISO**      **1251\_ ISO**      **1252\_ ISO**

**P2**  L<sub>1</sub> = \_\_\_\_\_  1251\_ ISO  1252\_ ISO

**H**       **V**

3 x d<sub>1</sub> ≤ 32  
4 x d<sub>1</sub> ≥ 38

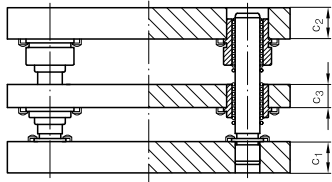


**1259 ISO**

**P2** L<sub>1</sub> = \_\_\_\_\_

BITTE KOPIEREN  
PLEASE COPY  
COPIARE PREGO  
PROSIMO KOPIRAJTE

Normgestelle  
Standard die sets  
Portastampi standard  
Standardni jarmi



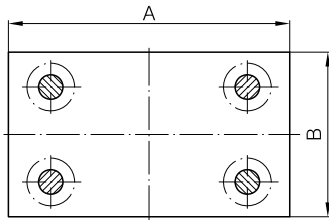
**P2**  
Platte 2 / Plate 2  
Piastra 2 / Plošča 2

**P3**  
Platte 3 / Plate 3  
Piastra 3 / Plošča 3

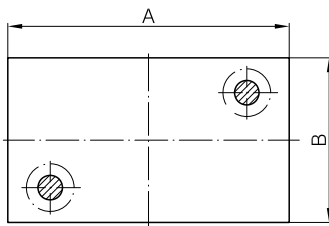
**P1**  
Platte 1 / Plate 1  
Piastra 1 / Plošča 1

Y - Kombination der Platten dicke  
Y - Combination of plates thickness  
Y - Combinazione dei spessori piastre  
Y - Kombinacija debelin plošč

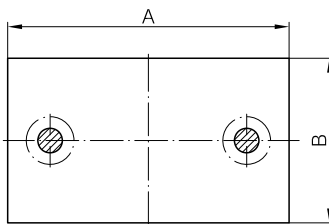
**1113 ISO**  A \_\_\_\_\_ x B \_\_\_\_\_ x Y \_\_\_\_\_



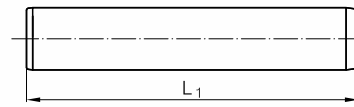
**1123 ISO**  A \_\_\_\_\_ x B \_\_\_\_\_ x Y \_\_\_\_\_



**1133 ISO**  A \_\_\_\_\_ x B \_\_\_\_\_ x Y \_\_\_\_\_



Führungssäulen / Guide pillars / Colonne di guida / Vodilni stebri



**1200 ISO**

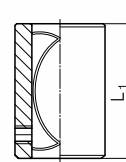
**P1**  L<sub>1</sub> = \_\_\_\_\_



**1210 ISO**

**P1**  L<sub>1</sub> = \_\_\_\_\_

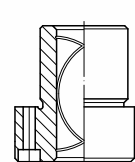
Führungsbuchsen / Guide bushes / Bussole guida / Vodilne puše



**1230 ISO**



**1231\_ ISO**

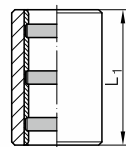


**1232\_ ISO**

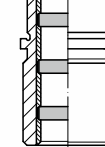
**P2**  L<sub>1</sub> = \_\_\_\_\_  1231\_ ISO  1232\_ ISO

**P3**  L<sub>1</sub> = \_\_\_\_\_  1231\_ ISO  1232\_ ISO

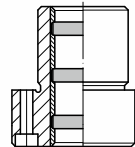
Führungsbuchsen, stahl-bronze mit Festschmierstoff / Self lubricating guide bushes  
Bussole guida con lubrificante solido / Samomazalne vodilne puše



**1240 ISO**



**1241\_ ISO**

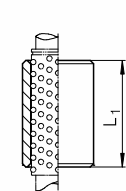


**1242\_ ISO**

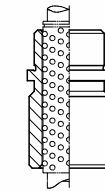
**P2**  L<sub>1</sub> = \_\_\_\_\_  1241\_ ISO  1242\_ ISO

**P3**  L<sub>1</sub> = \_\_\_\_\_  1241\_ ISO  1242\_ ISO

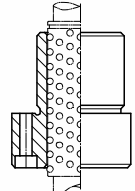
Kugelführungsbuchsen / Ball bearing guide bushes  
Bussole di guida a sfere / Krogljčne vodilne puše



**1250 ISO**



**1251\_ ISO**



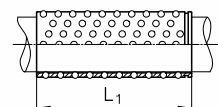
**1252\_ ISO**

**P2**  L<sub>1</sub> = \_\_\_\_\_  1251\_ ISO  1252\_ ISO

**P3**  L<sub>1</sub> = \_\_\_\_\_  1251\_ ISO  1252\_ ISO

**H**  **V**

3 x d<sub>1</sub> ≤ 32  
4 x d<sub>1</sub> ≥ 38



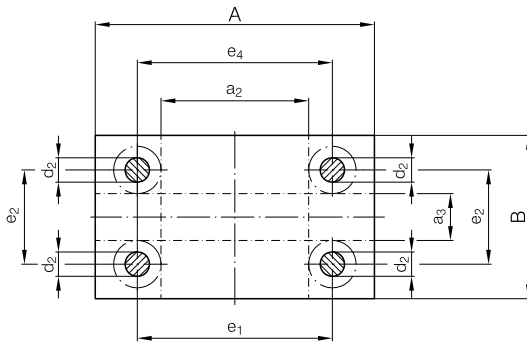
**1259 ISO**

**P2** L<sub>1</sub> = \_\_\_\_\_

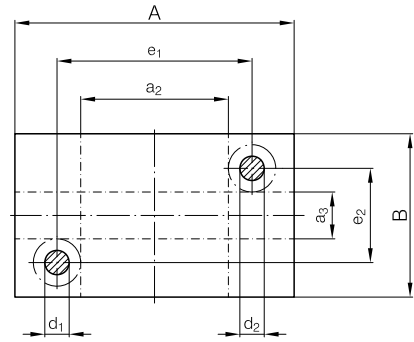
**P3** L<sub>1</sub> = \_\_\_\_\_



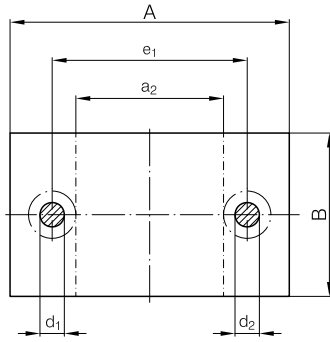
## 1113 ISO



## 1123 ISO



## 1133 ISO



a <sub>2</sub> x B	A x a <sub>3</sub>	d <sub>1</sub>	d <sub>2</sub>	e <sub>1</sub>	e <sub>2</sub>	e <sub>4</sub>	C <sub>1</sub>	C <sub>2</sub>	C <sub>3</sub>	Y	A x B							
60 x 80	-	19	20	100	-	-	32	32	25	1	160 x 80							
60 x 100							32	32		1	160 x 100							
60 x 125							32	32		1	160 x 125							
60 x 160					160 x 60	100	103	32		32	1	160 x 160						
70 x 100	-	24	25	120	-	-	40	40		1	2	200 x 100						
							40	32		2								
							32	40		3								
							32	32		4								
70 x 125							40	40		1	2	200 x 125						
							40	32		2								
							32	40		3								
							32	32		4								
70 x 160	200 x 70	24	25	120	-	-	40	32	2	3	200 x 160							
							32	40	3									
							32	32	4									
							40	40	1									
70 x 200							40	40	1	2	200 x 200							
							40	32	2									
							32	40	3									
							32	32	4									
120 x 125	-	24	25	170	-	-	40	40	1	2	250 x 125							
							40	32	2									
							32	40	3									
							32	32	4									
120 x 160							40	40	1	2	250 x 160							
							40	32	2									
							32	40	3									
							32	32	4									
120 x 200	250 x 70	24	25	170	120	-	40	40	1	2	250 x 200							
							40	32	2									
							32	40	3									
							32	32	4									
120 x 250							250 x 120	24	25	170	170	-	40	40	1	2	250 x 250	
													40	32	2			
													32	40	3			
													32	32	4			
165 x 160	-	30	32	225	-	-							50	50	32	1	315 x 160	
													50	40				2
													40	50				3
													40	40				4

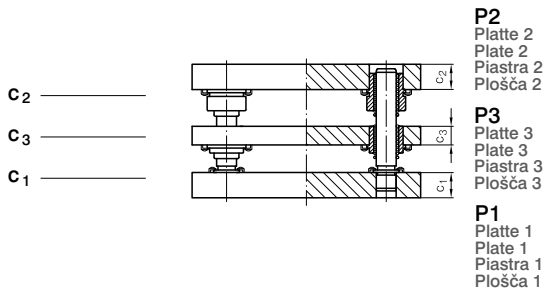




a <sub>2</sub> x B	A x a <sub>3</sub>	d <sub>1</sub>	d <sub>2</sub>	e <sub>1</sub>	e <sub>2</sub>	e <sub>4</sub>	c <sub>1</sub>	c <sub>2</sub>	c <sub>3</sub>	Y	A x B		
165 x 200	315 x 50	30	32	225	110	228	50	50	32	1	315 x 200		
							50	40		2			
							40	50		3			
					40		40	4					
50	50				1								
50	40				2								
165 x 250	315 x 100			225	160		50	50		3	315 x 250		
							40	50		4			
							40	40		1			
165 x 315	315 x 165			225	110		225	228		50	50	2	315 x 315
										50	40	3	
										40	50	4	
		40	40			1							
250 x 200	400 x 50	38	40	400	110	313	50	50	32	1	400 x 200		
							50	40		2			
							40	50		3			
					40		40	4					
50	50				1								
50	40				2								
250 x 250	400 x 100			160	160		225	228		50	50	3	400 x 250
										40	50	4	
										40	40	1	
250 x 315	400 x 165			310	110		225	228		50	50	2	400 x 315
										50	40	3	
										40	50	4	
		40	40			1							
250 x 400	400 x 250	310	160	310	228	50	50	2	400 x 400				
						50	40	3					
						40	50	4					
						40	40	1					
330 x 250	500 x 80	400	40	400	150	403	50	50	32	1	500 x 250		
							50	40		2			
							40	50		3			
					40		40	4					
50	50				1								
50	40				2								
330 x 315	500 x 145			215	215		300	228		50	50	3	500 x 315
										40	50	4	
										40	40	1	
330 x 400	500 x 240			400	150		300	228		50	50	2	500 x 400
										50	40	3	
										40	50	4	
		40	40			1							
330 x 500	500 x 330	400	150	400	228	50	50	2	500 x 500				
						50	40	3					
						40	50	4					
						40	40	1					
430 x 315	630 x 115	48	50	510	195	513	63	63	40	1	630 x 315		
							63	50		2			
							50	63		3			
					50		50	4					
63	63				1								
63	50				2								
430 x 400	630 x 200			280	280		513	228		50	63	3	630 x 400
										50	50	4	
										63	63	1	
430 x 500	630 x 300			380	380		513	228		63	50	2	630 x 500
										50	63	3	
										50	50	4	
		63	63			1							
430 x 630	630 x 430	510	510	513	228	63	50	2	630 x 630				
						63	50	3					
						50	63	4					
						50	50	1					
510 x 400	710 x 200	280	280	593	228	63	63	2	710 x 400				
						63	50	3					
						50	63	4					
						50	50	1					
510 x 500	710 x 300	380	380	593	228	63	63	2	710 x 500				
						63	50	3					
						50	63	4					
						50	50	1					
510 x 630	710 x 430	510	510	593	228	63	63	2	710 x 630				
						63	50	3					
						50	63	4					
						50	50	1					
600 x 400	800 x 200	280	280	683	228	63	63	2	800 x 400				
						63	50	3					
						50	63	4					
						50	50	1					
600 x 500	800 x 300	380	380	683	228	63	63	2	800 x 500				
						63	50	3					
						50	63	4					
						50	50	1					
600 x 630	800 x 430	510	510	683	228	63	63	2	800 x 630				
						63	50	3					
						50	63	4					
						50	50	1					

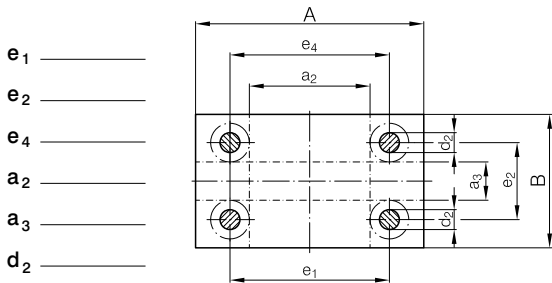
BITTE KOPIEREN  
PLEASE COPY  
COPIARE PREGO  
PROSIMO KOPIRAJTE

Sondergestelle  
Custom made die sets  
Portastampi su disegno  
Jarmi po naročilu



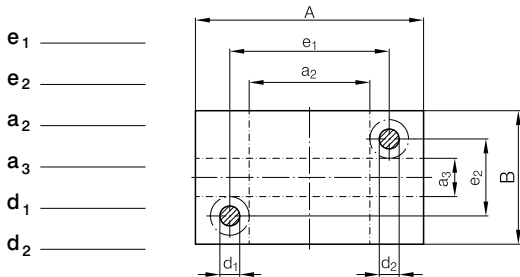
1113 ISO

A \_\_\_\_\_ x B \_\_\_\_\_



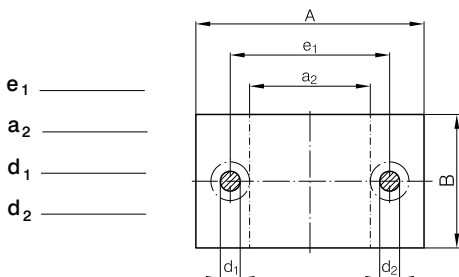
1123 ISO

A \_\_\_\_\_ x B \_\_\_\_\_



1133 ISO

A \_\_\_\_\_ x B \_\_\_\_\_



Führungssäulen / Guide pillars / Colonne di guida / Vodilni stebri



**P1**

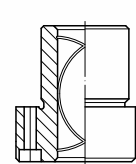
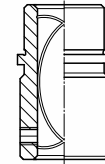
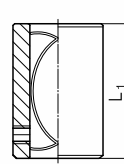
$L_1 =$  \_\_\_\_\_



**P1**

$L_1 =$  \_\_\_\_\_

Führungsbuchsen / Guide bushes / Bussole guida / Vodilne puše



**P2**

$L_1 =$  \_\_\_\_\_

1231\_ ISO

1232\_ ISO

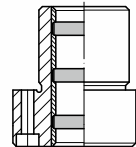
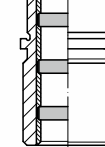
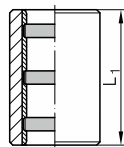
**P3**

$L_1 =$  \_\_\_\_\_

1231\_ ISO

1232\_ ISO

Führungsbuchsen, stahl-bronze mit Festschmierstoff / Self lubricating guide bushes  
Bussole guida con lubrificante solido / Samomazalne vodilne puše



**P2**

$L_1 =$  \_\_\_\_\_

1241\_ ISO

1242\_ ISO

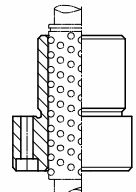
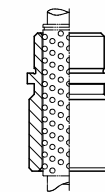
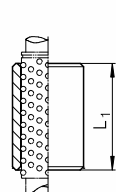
**P3**

$L_1 =$  \_\_\_\_\_

1241\_ ISO

1242\_ ISO

Kugelführungsbuchsen / Ball bearing guide bushes  
Bussole di guida a sfere / Krogljčne vodilne puše



**P2**

$L_1 =$  \_\_\_\_\_

1251\_ ISO

1252\_ ISO

**P3**

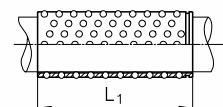
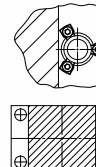
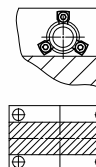
$L_1 =$  \_\_\_\_\_

1251\_ ISO

1252\_ ISO

**H**  **V**

3 x  $d_1 \leq 32$   
4 x  $d_1 \geq 38$



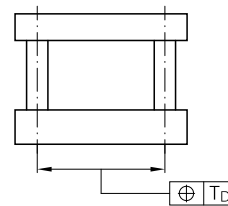
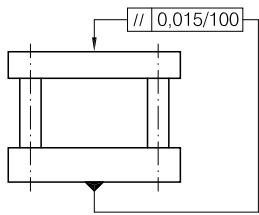
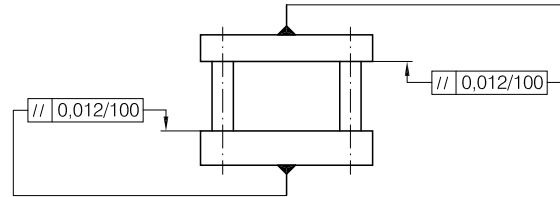
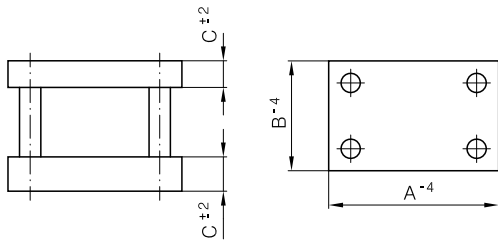
**P2**  $L_1 =$  \_\_\_\_\_

**P3**  $L_1 =$  \_\_\_\_\_

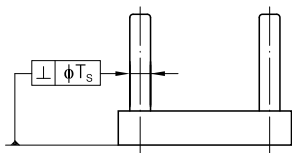
## INFO

### Säulengestelle toleranzen Die Sets Tolerances

### Tolleranze portastampi Tolerance jarmov



$T_D$		
-	100 mm	= $\pm 0,008$ mm
> 100	- 180 mm	= $\pm 0,010$ mm
> 180	- 350 mm	= $\pm 0,012$ mm
> 350	- 500 mm	= $\pm 0,015$ mm
> 500	- 710 mm	= $\pm 0,018$ mm
> 710	- 1000 mm	= $\pm 0,020$ mm



$T_s = 0,012/100$ mm

