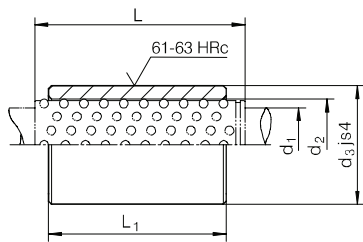


1250.ISO

ISO 9448-3
DIN 9831

Kugelführungsbuchsen, glatt, zum Einkleben
Ball bearing guide bushes, smooth, for gluing
Bussole di guida a sfera, lisce, per incollaggio

Kroglične vodilne puše, gladke, za lepljenje
Vodící pouzdra pro kuličkovou klec, hladká, k nalepení
Kuglično vodeće čaure, glatke, za lepljenje



1250.ISO - $d_1 \times L_1$

| L | d_3 | d_2 | d_1 | L_1 |
|----|-------|----------|----------|-------|
| 40 | 22 | 14-15-16 | 10-11-12 | 23 |
| | | | | 30 |
| | | | | 37 |
| 45 | 28 | 21 - 22 | 15 - 16 | 23 |
| | | | | 30 |
| | | | | 37 |
| 56 | 28 | 21 - 22 | 15 - 16 | 47 |
| 71 | | | | |
| 60 | | | | |
| 45 | 32 | 25 - 26 | 19 - 20 | 23 |
| | | | | 30 |
| | | | | 37 |
| 56 | 32 | 25 - 26 | 19 - 20 | 47 |
| 71 | | | | |
| 60 | | | | |
| 95 | 32 | 25 - 26 | 19 - 20 | 77 |
| 45 | | | | |
| 23 | | | | |

| L | d_3 | d_2 | d_1 | L_1 |
|-----|-------|---------|---------|-------|
| 45 | 40 | 30 - 31 | 24 - 25 | 30 |
| 56 | | | | |
| 37 | | | | |
| 71 | 40 | 30 - 31 | 24 - 25 | 47 |
| 60 | | | | |
| 77 | | | | |
| 95 | 40 | 30 - 31 | 24 - 25 | 77 |
| 45 | | | | |
| 30 | | | | |
| 50 | 48 | 38 - 40 | 30 - 32 | 37 |
| 56 | | | | |
| 47 | | | | |
| 71 | 48 | 38 - 40 | 30 - 32 | 60 |
| 95 | | | | |
| 77 | | | | |
| 120 | 48 | 38 - 40 | 30 - 32 | 95 |
| 45 | | | | |
| 30 | | | | |
| 50 | 58 | 46 - 48 | 38 - 40 | 37 |
| 63 | | | | |
| 47 | | | | |
| 80 | 58 | 46 - 48 | 38 - 40 | 60 |

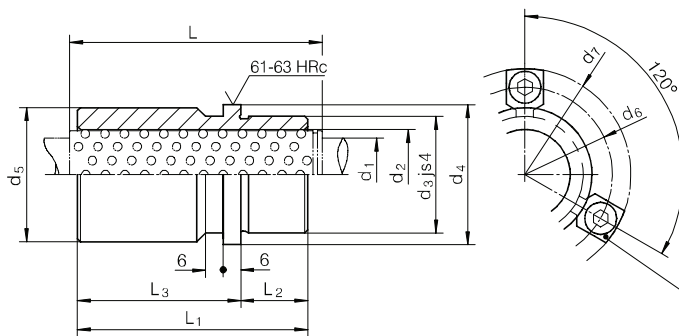
| L | d_3 | d_2 | d_1 | L_1 |
|-----|-------|---------|---------|-------|
| 95 | 58 | 46 - 48 | 38 - 40 | 77 |
| 120 | | | | |
| 95 | | | | |
| 140 | 58 | 46 - 48 | 38 - 40 | 120 |
| 50 | | | | |
| 37 | | | | |
| 63 | 70 | 56 - 58 | 48 - 50 | 47 |
| 80 | | | | |
| 60 | | | | |
| 95 | 70 | 56 - 58 | 48 - 50 | 77 |
| 120 | | | | |
| 95 | | | | |
| 140 | 70 | 56 - 58 | 48 - 50 | 120 |
| 95 | | | | |
| 60 | | | | |
| 95 | 85 | 68 - 71 | 60 - 63 | 77 |
| 120 | | | | |
| 95 | | | | |
| 140 | 85 | 68 - 71 | 60 - 63 | 120 |
| 105 | | | | |
| 80 | | | | |
| 120 | 105 | 92 | 80 | 120 |

1251.1.ISO

ISO 9448-7
DIN 9831

Kugelführungsbuchsen mit Bund
Ball bearing guide bushes with shoulder
Bussole di guida a sfera con collare

Kroglične vodilne puše z vencem
Vodící pouzdra pro kuličkovou klec s nákrůžkem
Kuglično vodeće čaure sa vencem



1267 ISO

3 x $d_1 \leq 32$
4 x $d_1 \geq 38$



1251.1.ISO - d_1

| L | L_1 | L_2 | L_3 | d_7 | d_6 | d_5 | d_4 | d_3 | d_2 | d_1 |
|-----|-------|-------|-------|-------|-------|-------|-------|-------|-------|-------|
| 71 | 59 | 23 | 36 | 64,7 | 52 | 39 | 40 | 32 | 25 | 19 |
| | | | | | | | | | | 20 |
| 95 | 79 | 23 | 56 | 72,7 | 60 | 46 | 48 | 40 | 30 | 24 |
| | | | | | | | | | | 25 |
| 120 | 93 | 30 | 63 | 79,7 | 67 | 53 | 56 | 48 | 38 | 30 |
| | | | | | | | | | | 32 |
| 140 | 127 | 47 | 80 | 103,7 | 91 | 77 | 80 | 70 | 46 | 38 |
| | | | | | | | | | | 40 |
| 160 | 150 | 60 | 90 | 118,7 | 106 | 92 | 95 | 85 | 56 | 48 |
| | | | | | | | | | | 50 |
| 160 | 150 | 60 | 90 | 141,7 | 129 | 115 | 118 | 105 | 68 | 60 |
| | | | | | | | | | | 63 |
| 160 | 150 | 60 | 90 | 141,7 | 129 | 115 | 118 | 105 | 71 | 63 |
| | | | | | | | | | | 80 |