

1311.3

C-HSS ISO 9181  
DIN 9861/2

Schneidstempel mit konischem Kopf, mit abgesetztem Schaft  
Punches with conical head, stepped  
Punzoni con testa conica, ribassati

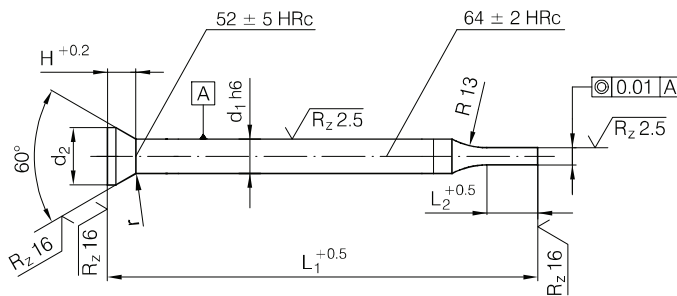
Rezilni pestiči s konično glavou, reducirani  
Razniky s kuželovou hlavou, osazené  
Probojci sa konusnom glavom, redukovani

1311.4

C-ASP ISO 9181  
DIN 9861/2

1311.6

C-HM ISO 9181  
DIN 9861/2



Mat.: HSS, ASP, HM

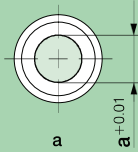


Form B

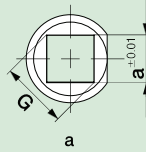
Form C

- Abmessungen auf Anfrage
- dimensions upon request
- misure su richiesta
- dimenzije na povpraševanje
- rozměry na poptávku
- dimenzije na zahtev

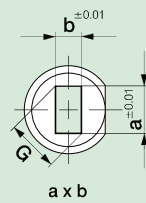
Typ: 01



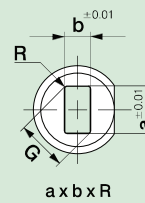
02



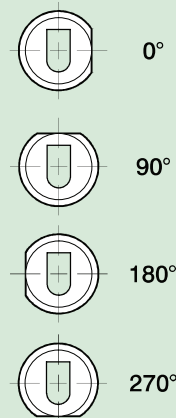
03



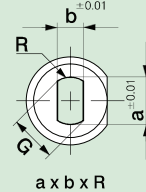
04



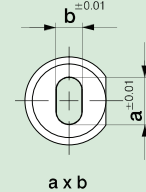
α (STD=0°)



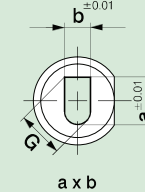
05



06



07



- C-ASP, C-HM auf Bestellung machen
- C-ASP, C-HM make to order
- C-ASP, C-HM su ordinazione
- C-ASP, C-HM po naročilu
- C-ASP, C-HM na objednávku
- C-ASP, C-HM po narudžbi

1311.3

C-HSS ISO 9181  
DIN 9861/2

Schneidstempel mit konischem Kopf, mit abgesetztem Schaft  
Punches with conical head, stepped  
Punzoni con testa conica, ribassati

Rezilni pestiči s konično glavou, reducirani  
Razniky s kuželovou hlavou, osazené  
Probojci sa konusnom glavom, redukovaní

1311.4

C-ASP ISO 9181  
DIN 9861/2

1311.6

C-HM ISO 9181  
DIN 9861/2



1311.3 -  $d_1 \times L_1 / Typ\_x \times b \times R \times L_2 \times \alpha$



1311.4 -  $d_1 \times L_1 / Typ\_x \times b \times R \times L_2 \times \alpha$



1311.6 -  $d_1 \times L_1 / Typ\_x \times b \times R \times L_2 \times \alpha$

d <sub>2</sub>	r	H	d <sub>1</sub>	L <sub>1</sub> =71	L <sub>1</sub> =80	L <sub>1</sub> =100	Form B	L <sub>2</sub>			G <sub>max</sub>	b <sub>min</sub>
							a					
2,2	0,4 <sup>+0.3</sup>	1,11	1,5	■	■	■	0,50 - 1,40	7			1,4	0,50
3,0		1,37	2,0	■	■	■	0,50 - 1,90	7			1,9	0,50
4,5	0,6 <sup>+0.4</sup>	1,80	3,0	■	■	■	1,00 - 2,90	7	10		2,9	1,60
5,5		1,80	4,0	■	■	■	1,00 - 3,90	7	10		3,9	2,50
6,5		1,80	5,0	■	■	■	1,50 - 4,90	7	10	13	4,9	3,50
8,0		2,23	6,0	■	■	■	1,60 - 5,90	7	10	13	5,9	4,50
10,0	1,0 <sup>+0.5</sup>	2,73	8,0	■	■	■	2,50 - 7,90	10	13	19	7,9	5,00
12,0		2,73	10,0	■	■	■	4,00 - 9,90	10	13	19	9,9	5,00
15,0		2,73	13,0	■	■	■	5,00 - 12,90	10	13	19	12,9	9,00
18,0		1,5 <sup>+0.5</sup>	2,23	16,0	■	■	■	8,00 - 15,90	10	13	19	15,9

