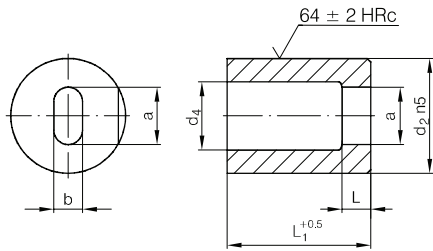


1340

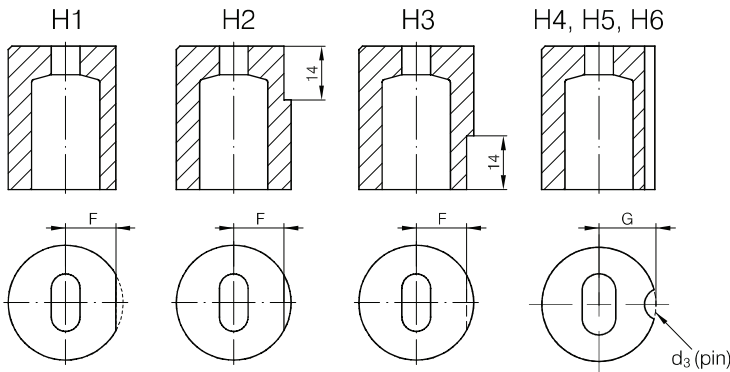
ISO 8977

Schneidbuchsen ohne Bund, Rund/Form
 Matrixes without sholder, round/shaped
 Matrici per stampi senza collare, tonde/sagomate

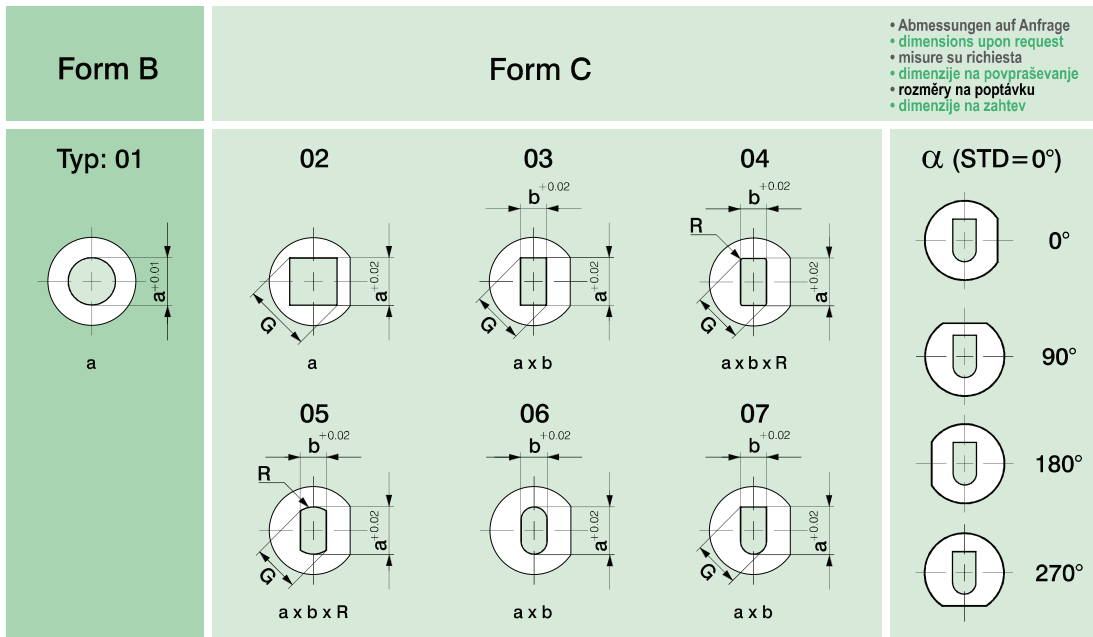
Rezilne matrice brez venca, okrogle/oblikovne
 Matrice bez nákržku, kulaté/tvarové
 Rezne matrice bez venca, okrugle/oblikovane



Mat.: HSS



	H4 d ₃ =3	H5 d ₃ =4	H6 d ₃ =6
d ₂	G	G	G
10	5,0	6,0	7,0
13	6,5	7,2	8,2
16	8,0	8,0	9,0
20	10,0	10,0	11,0
22	11,0	11,0	12,0
25	12,5	12,5	13,5
32	16,0	16,0	16,0
38	19,0	19,0	19,0
40	20,0	20,0	20,0
50	25,0	25,0	25,0



- Abmessungen auf Anfrage
- dimensions upon request
- misure su richiesta
- dimenzije na popraševanje
- rozměry na poptávku
- dimenzije na zahtev

1340 - d₂ x L₁ / Typ_x a x b x α x H x L

d ₄ max	F	d ₂	L ₁ =16	L ₁ =20	L ₁ =22	L ₁ =25	L ₁ =28	L ₁ =30	L ₁ =32	L ₁ =35	L ₁ =40	Form B		Form C		L	
												a	b _{min}	G _{max}	STD	HD	
2,8		5	■	■	■	■	■	■	■	■		1,00 - 2,40			2		
3,5		6	■	■	■	■	■	■	■	■		1,60 - 3,00			3		
4,0		8	■	■	■	■	■	■	■	■		2,00 - 3,50			4		
5,8	4,0	10	■	■	■	■	■	■	■	■		2,50 - 5,00	3,00	5,0	4	8	
8,0	5,5	13		■	■	■	■	■	■	■		4,00 - 7,00	4,00	7,0	5	8	
9,5	7,0	16		■	■	■	■	■	■	■		6,00 - 9,00	6,00	9,0	5	8	
12,0	8,5	20		■	■	■	■	■	■	■		8,00 - 11,00	8,00	11,0	8	12	
15,0	9,5	22		■	■	■	■	■	■	■		9,00 - 14,00	9,00	14,0	8	12	
17,3	11,0	25		■	■	■	■	■	■	■		10,70 - 16,00	10,70	16,0	8	12	
20,7	14,0	32		■	■	■	■	■	■	■		15,00 - 20,00	15,00	20,0	8	12	
27,7	17,0	38			■	■	■	■	■	■		19,00 - 27,00	19,00	27,0	8	12	
27,7	18,0	40				■	■	■	■	■		19,00 - 27,00	19,00	27,0	8	12	
37,0	23,0	50					■	■	■	■	■	26,00 - 36,00	26,00	36,00	8	12	