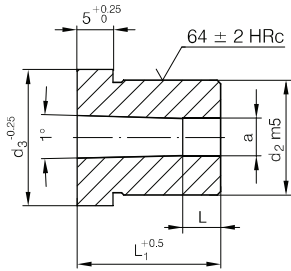


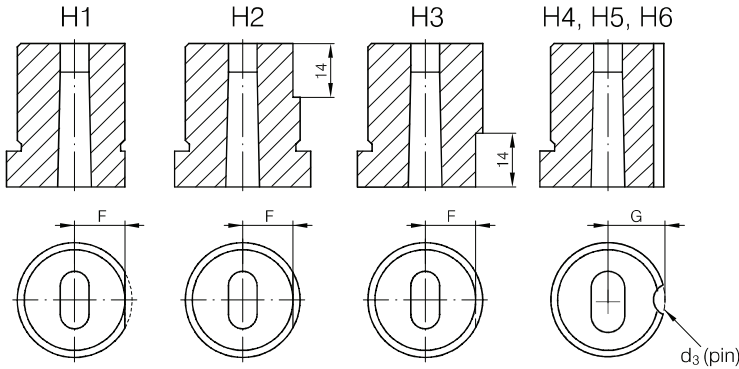
1346

Schneidbuchsen mit Bund Automobil - Norm, Rund/Form
 Matrixes with shoulder automotive standard, round/shaped
 Matrici per stampi con collare standard automobilistico, tonde/sagomate

Rezilne matrice z vencem za avtomobilski standard, okrogle/oblikovne
 Matrice s nákrúžkem, automobilový standard, kulaté/tvarové
 Rezne matrice sa vencem za automobilski standard, okrugle/oblikovane



Mat.: HSS



	H4 d ₃ =3	H5 d ₃ =4	H6 d ₃ =6
d ₂	G	G	G
10	5,0	6,0	7,0
13	6,5	7,2	8,2
16	8,0	8,0	9,0
20	10,0	10,0	11,0
22	11,0	11,0	12,0
25	12,5	12,5	13,5
32	16,0	16,0	16,0
38	19,0	19,0	19,0
40	20,0	20,00	20,0

Form B

Typ: 01

Form C

02

03

04

05

06

07

α (STD=0°)

- Abmessungen auf Anfrage
- dimensions upon request
- misure su richiesta
- dimenzije na povpraševanje
- rozměry na poptávku
- dimenzije na zahtev

1346 - d₂ x L₁ / Typ_ x a x b x R x α x L

d ₃	d ₂	L ₁ =16	L ₁ =20	L ₁ =22	L ₁ =25	L ₁ =28	L ₁ =32	L ₁ =35	Form B		Form C		L	
									a	b _{min}	G _{max}	STD	HD	
13	10	■	■	■	■	■	■	■	2,00 - 5,00	2,00	5,0	4	8	
16	13	■	■	■	■	■	■	■	3,00 - 7,00	3,00	7,0	5	8	
19	16	■	■	■	■	■	■	■	5,00 - 8,00	5,00	9,0	5	8	
23	20	■	■	■	■	■	■	■	7,00 - 11,00	7,00	11,0	8	12	
25	22	■	■	■	■	■	■	■	9,00 - 14,00	9,00	14,0	8	12	
28	25	■	■	■	■	■	■	■	11,00 - 16,00	11,00	16,0	8	12	
35	32	■	■	■	■	■	■	■	16,00 - 19,00	16,00	20,0	8	12	
43	40	■	■	■	■	■	■	■	19,00 - 28,00	19,00	27,0	8	12	