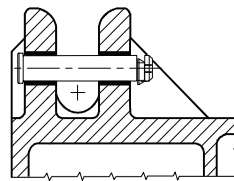
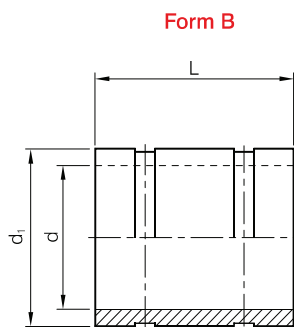
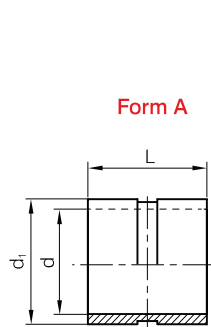


3452

Buchsen für Tragbolzen
Bushes for Lifting Pin
Bussole per perno di sollevamento

Puše transportnega droga
Pouzdra transportniho čepu
Čaure transportnog stuba



CE



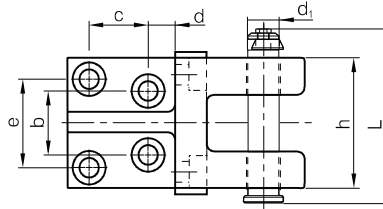
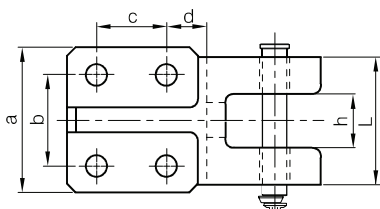
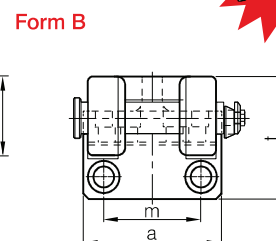
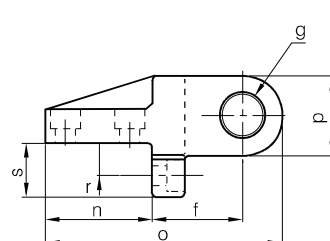
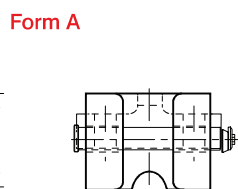
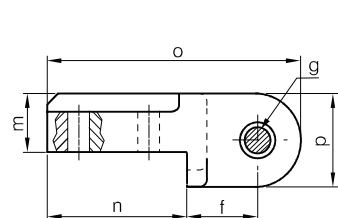
3452 - d x L

Form	d	d ₁	L
A	34	44	40
A	42	52	50
A	52	62	60
A	65	75	80
B	78	100	100
B	78	105	100

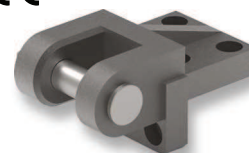
3453.1

Tragwangen mit Tragbolzen nach
Lifting Brackets with Pin
Atacchi di sollevamento a spalla con perno

Nosilci transportnega droga
Transportni držaki s čepem
Nosaci transportnog stuba



CE



3453.1 - Max. Load (kg)

Max. Load (kg)	Max. Die Weight (kg)	Form	a	b	c	d	e	f	g	h	L	m	n	o	p	r	s	t
600	1200	A	80	50	40	22,5	-	39	16	70	102,5	32	80	145	52	-	-	-
1000	2000	A	90	60	40	27,5	-	42	21	79	113,5	36	90	160	56	-	-	-
2000	4000	A	100	65	65	32,5	-	60	26	90	128,5	50	120	210	70	-	-	-
4000	8000	B	135	56	60	20	84	85	34	125	166,5	96	100	221	72	30	50	111
7000	14000	B	180	80	70	30	110	100	44	160	210,5	130	125	270	90	35	60	140