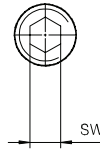
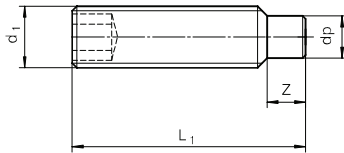


**3463**

ISO 4028  
DIN 915

Gewindestift mit Zapfen  
Locking screws with engaged surface  
Grani punta cilindrica

Navojni zatiči z nastavkom  
Zajjščovací šrouby s čepem  
Navojni čepovi sa nastavkom



**3463 - d<sub>1</sub> x L<sub>1</sub>**

Z	dp	SW	d <sub>1</sub>	L <sub>1</sub>
2	2,5	2	M4	10
3	4	3	M6	12
				16
				20
				25
4	5,5	4	M8	16
				20
				25
5	7	5	M10	30
				20

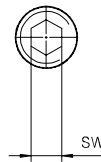
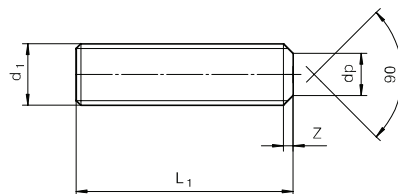
Z	dp	SW	d <sub>1</sub>	L <sub>1</sub>
5	7	5	M10	30
				40
				50
6	8,5	6	M12	30
				40
				50
8	12	8	M16	40
				50
				60

**3464**

ISO 4626  
DIN 913

Gewindestift  
Locking screws  
Grani punta piatta

Navojni zatiči  
Zajjščovací šrouby  
Navojni čepovi



**3464 - d<sub>1</sub> x L<sub>1</sub>**

SW	z	dp	d <sub>1</sub>	L <sub>1</sub>
2	0,75	2	M4	6
				8
				10
				12
2,5	0,75	3,5	M5	6
				8
				10
				12
				16
				20
3	1	4	M6	8
				10
				12
				16
				20
				25
4	1,25	5,5	M8	30
				8
				10
				12
				16
				20
				25
				35

SW	z	dp	d <sub>1</sub>	L <sub>1</sub>
4	1,25	5,5	M8	40
				10
				12
				16
				20
				25
5	1,5	7	M10	30
				35
				40
				45
				50
				12
				6
20				
25				
30				
35				
40				
45				
8	2	12	M16	20
				30
				40
				60